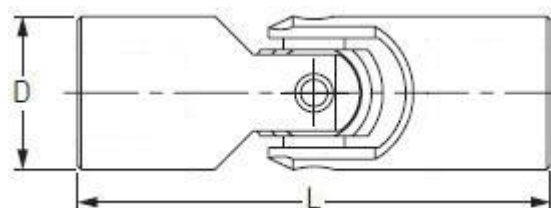




ZGLOBOVI

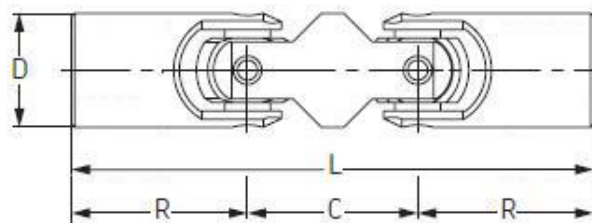
| Oznaka | L | D | M ₀ |
|--------|-----|----|----------------|
| | mm | mm | Nm |
| A10 | 38 | 10 | 13.5 |
| A13 | 45 | 13 | 26 |
| A16 | 52 | 16 | 45 |
| A20 | 62 | 20 | 88 |
| A25 | 74 | 25 | 180 |
| A32 | 86 | 32 | 405 |
| A40 | 108 | 40 | 860 |
| A45 | 120 | 45 | 1250 |
| A50 | 132 | 50 | 1730 |
| A63 | 166 | 63 | 3400 |



Napomena: zglobovi nemaju izbušene rupe sa čeonih strana i one se buše po potrebi

ZGLOBOVI - dupli

| Oznaka | L | D | R | C | M ₀ |
|--------|-----|----|----|----|----------------|
| | mm | mm | mm | mm | Nm |
| B16 | 77 | 16 | 26 | 25 | 45 |
| B20 | 92 | 20 | 31 | 30 | 88 |
| B25 | 110 | 25 | 37 | 36 | 180 |
| B32 | 133 | 32 | 43 | 47 | 405 |
| B40 | 164 | 40 | 54 | 56 | 860 |
| B45 | 183 | 45 | 60 | 63 | 1250 |
| B50 | 202 | 50 | 66 | 70 | 1730 |
| B63 | 250 | 63 | 83 | 84 | 3400 |



Napomena: zglobovi nemaju izbušene rupe sa čeonih strana i one se buše po potrebi